

Stormwater and the Construction Industry

Protect Natural Features

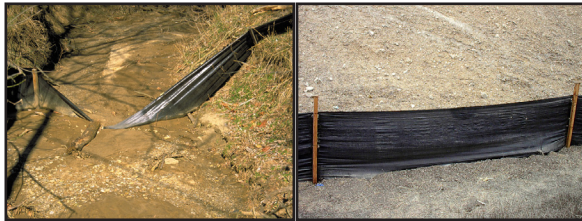


Bad

Good

- Minimize Clearing.
- Minimize the amount of exposed soil.
- Identify and protect areas where existing vegetation, such as trees, will not be disturbed by construction activity.
- Protect streams, stream buffers, wild woodlands, wetlands, or other sensitive areas from any disturbance or construction activity by fencing or otherwise clearly marking these areas.

Silt Fencing



Bad

Good

- Install silt fence properly! Make sure the the fabric is buried in the ground, not just tucked under the haybale.
- Inspect and maintain silt fences after each rainstorm.
- Securely attach the material to the stakes.
- Don't place silt fences in the middle of a waterway or use them as a check dam.
- Make sure stormwater is not flowing around the silt fence.

Dirt Stockpiles



Bad

Good

- Cover or hydroseed all dirt stockpiles immediately.

Construction Entrances



Bad

Good

- Remove mud and dirt from the tires of construction vehicles before they enter a paved roadway.
- Properly size entrance BMPs for all anticipated vehicles.
- Make sure that the construction entrance does not become buried in soil.

Site Stabilization



Bad

Good

- Vegetate, mulch, hydroseed, install erosion control blankets, or otherwise stabilize all exposed areas as soon as land alterations have been completed.

Vegetative Buffers



Bad

Good

- Protect or install vegetative buffers along waterbodies to slow and filter stormwater runoff.
- Maintain buffers by mowing or replanting periodically to ensure their effectiveness.

Construction Phasing



Bad

Good

- Sequence construction activities so that the soil is not exposed for long periods of time.
- Schedule or limit grading to small areas.
- Install key sediment control practices before site grading begins.
- Schedule site stabilization, such as landscaping, to be completed immediately after the land has been graded to its final contour.

Slopes



Bad

Good

- Rough grade or terrace slopes.
- Break up long slopes with sediment barriers, or under drain, or divert stormwater away from slopes.

Storm Drain Inlet Protection



Bad

Good

- Use rock or other appropriate material to cover the storm drain inlet to filter out trash and debris.
- Make sure the rock size is appropriate (usually 1 to 2 inches in diameter).
- If you use inlet filters or silt sacks, maintain them regularly.

Protect your business, your clients and your reputation by installing and maintaining construction site stormwater best management practices (BMPs) properly.

You'll not only avoid fines and work stoppages, you'll be protecting the waterways your community depends on, and earning a well deserved reputation.



Construction Stormwater: A Big Problem

Rain falling on construction sites with disturbed soils can wash off into wetlands, streams or onto paved surfaces that drain to waterways. Construction activities are a major source of erosion and water pollution.

Be a Responsible Contractor

By taking common-sense, often low-cost actions before and during construction, you can protect our waterways, and earn a reputation as a responsible contractor. Review the tips inside, and ask your local Conservation Commission or engineering department for advice.

Get Your Permit and Don't Get Sued!

All construction sites in MA that disturb an acre or more of earth must apply for a "Construction General Permit" from the US EPA. Local rules vary from community to community, but many communities in our area require a town stormwater permit when you disturb as little as 2,500 square feet of earth.

Cities and towns actively monitor for violations and can take enforcement action, shutdown projects, and levy fines. In many cases, third party lawyers and environmental groups can also sue contractors who don't comply with construction stormwater permits. When they do, contractors pay the other side's legal costs, plus penalties, plus the cost to correct problems.

Learn More

Learn more about the EPA Construction General Permit and how to apply at www.nepwater.org. Contact the town or city Conservation Commission where your project is located for more on local rules and technical assistance.



For more info. go to: www.nepwater.org

Construction

Stormwater Pollution Prevention Guide

Maintain your BMPs!



Stormwater pollution is the bacteria, chemicals, metals, nutrients and other contaminants that wash down stormdrains and into waterways.